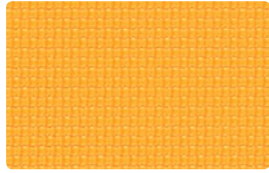




VINYL ANTHOLOGYCOORDINATES

+ POLYURETHANE





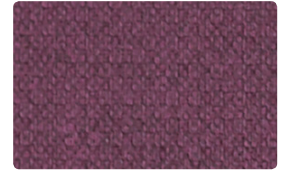
FINESSE
FI-002 Lemon



SLICK
SL-009 Bittersweet



SKETCH
SC-001 Poppy



KEY LARGO
KL-015 Crocus



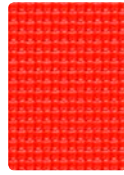
FLORENTINO
FT-032 Jonquil



SILVERWEAVE
SW-002 Sienna



SILVERWEAVE
SW-039 Bittersweet



FINESSE
FI-001 Poppy



KEY LARGO
KL-011 Raspberry



COUNTERPOINT
CP-014 Capri



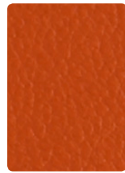
SLICK
SL-034 Bluejay



SILVERWEAVE
SW-012 Daylily



COUNTERPOINT
CP-009 Tangerine



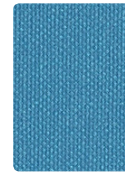
FLORENTINO
FT-029 Mango



SLICK
SL-001 Tomato



SILVERWEAVE
SW-001 Cranberry



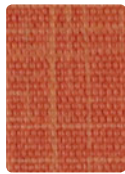
SILVERWEAVE
SW-034 Cyan



SLICK
SL-014 Skipper



SLICK
SL-002 Lemon



SKETCH
SC-009 Tangerine



PHOENIX
PH-029 Marigold



PHOENIX
PH-039 Tangelo



COUNTERPOINT
CP-008 Sangria



SLICK
SL-044 Azure



COUNTERPOINT
CP-004 Royal



PHOENIX
PH-032 Straw



SILVERWEAVE
SW-019 Tangerine



SLICK
SL-019 Paprika



COUNTERPOINT
CP-001 Scarlet



PHOENIX
PH-008 Magenta



SKETCH
SC-014 Royal



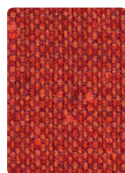
SILVERWEAVE
SW-014 Baltic



SKETCH
SC-002 Chamois



PHOENIX
PH-009 Terra Cotta



KEY LARGO
KL-019 Cayenne



FLORENTINO
FT-001 Scarlet



SILVERWEAVE
SW-005 Eggplant



SILVERWEAVE
SW-004 Indigo



FINESSE
FI-004 Indigo



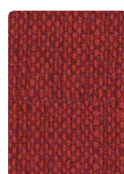
FLORENTINO
FT-012 Dijon



SILVERWEAVE
SW-009 Cayenne



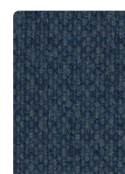
SKETCH
SC-011 Paprika



KEY LARGO
KL-001 Crimson



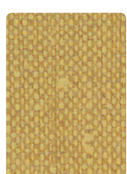
FLORENTINO
FT-008 Plum



KEY LARGO
KL-004 Ultramarine



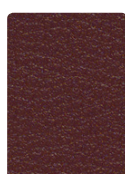
PHOENIX
PH-004 Admiral



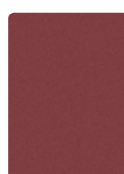
KEY LARGO
KL-012 Wheat



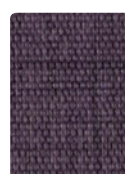
PHOENIX
PH-019 Chili



FLORENTINO
FT-009 Chili



SLICK
SL-008 Claret



SKETCH
SC-005 Violet



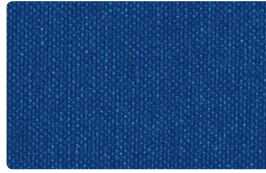
SLICK
SL-004 Sapphire



FLORENTINO
FT-004 Sapphire



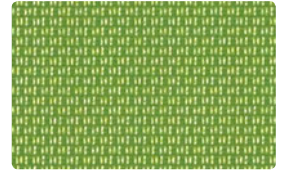
FLORENTINO
FT-034 Bluejay



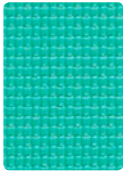
SILVERWEAVE
SW-024 Cobalt



PHOENIX
PH-054 Capri



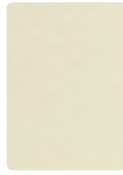
COUNTERPOINT
CP-003 Emerald



FINESSE
FI-014 Capri



SILVERWEAVE
SW-053 Spring



FLORENTINO
FT-007 Cream



SILVERWEAVE
SW-007 Camel



COUNTERPOINT
CP-027 Pyrite



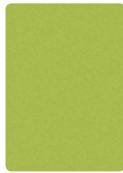
SLICK
SL-047 Chalk



SKETCH
SC-036 Glacier



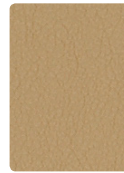
KEY LARGO
KL-024 Nassau



SLICK
SL-023 Lime



KEY LARGO
KL-007 Parchment



PHOENIX
PH-017 Buckskin



SILVERWEAVE
SW-017 Doe



FINESSE
FI-017 Stucco



SILVERWEAVE
SW-016 Cadet



PHOENIX
PH-023 Mallard



FLORENTINO
FT-033 Willow



SKETCH
SC-007 Ecrú



KEY LARGO
KL-010 Toast



PHOENIX
PH-020 Clove



COUNTERPOINT
CP-016 Nickel



PHOENIX
PH-026 Charcoal



SLICK
SL-043 Calypso



KEY LARGO
KL-033 Pear



COUNTERPOINT
CP-007 Mica



SKETCH
SC-020 Chestnut



KEY LARGO
KL-020 Sandstone



SILVERWEAVE
SW-026 Zinc



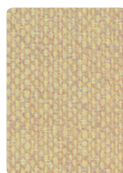
KEY LARGO
KL-006 Graphite



FLORENTINO
FT-044 Turquoise



SKETCH
SC-013 Basil



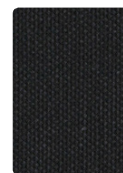
KEY LARGO
KL-027 Sand



COUNTERPOINT
CP-010 Umber



SKETCH
SC-026 Cobblestone



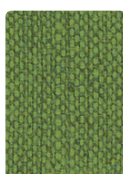
SILVERWEAVE
SW-006 Graphite



SKETCH
SC-006 Charcoal



SILVERWEAVE
SW-044 Calypso



KEY LARGO
KL-013 Palm



FLORENTINO
FT-010 Latte



SILVERWEAVE
SW-000 Cocoa



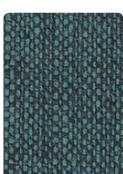
SILVERWEAVE
SW-020 Mica



PHOENIX
PH-006 Lava



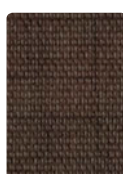
FINESSE
FI-006 Caviar



KEY LARGO
KL-014 Aegean



FLORENTINO
FT-043 Basil



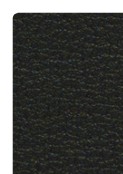
SKETCH
SC-000 Espresso



PHOENIX
PH-000 Fudge



FLORENTINO
FT-020 Bark



FLORENTINO
FT-006 Jet



SLICK
SL-006 Jet

Additional colors are available. Please refer to the mediatechnologies website.

TECHNICAL INFORMATION

Vinyl Anthology + Polyurethane Coordinates

Pattern 54"	Content and Backing	Weight/ Linear Yd.	Finish	Abrasion Wyzenbeek	Light- Fastness	Flammability#	Cleaning Code	Grade
COUNTERPOINT <i>Directional</i>	81% Polyurethane face, 19% Polyester backing – PVC FREE	21 oz.	Soil and stain resistant top coat with antibacterial silver ion technology	400,000 [^] Double Rubs	250 hours	Cal. 117-2013 NFPA 260/UFAC	Bleach Cleanable, Coated Fabrics Cleaning – Refer to Mayer website for complete cleaning info.	4
FINESSE <i>Directional</i>	75% Vinyl face, 25% Polyester backing – Phthalate Free	30.75 oz.	Soil and stain resistant top coat – Ink resistant technology with Anti- Bacterial/Microbial	100,000 Double Rubs	200 hours	Cal. 117-2013 NFPA 260/UFAC	W, Bleach Cleanable, Coated Fabrics Cleaning – Refer to Mayer website for complete cleaning info.	2
FLORENTINO	86% Vinyl face, 14% Polyester backing – Phthalate (21P) Free	28 oz.	Soil & stain resistant topcoat with ink resistant technology	651,000 [^] Double Rubs	650 hours	Cal. 117-2013 NFPA 260/UFAC	WS, Bleach Cleanable, Coated Fabrics Cleaning – Refer to Mayer website for complete cleaning info.	2
KEY LARGO <i>Directional</i> Not recommended for Ad Lib product*	86% Vinyl face, 14% Polyester backing – Phthalate (21P) Free	28 oz.	Soil & stain resistant topcoat with ink resistant technology	250,000 [^] Double Rubs	650 hours	Cal. 117-2013 NFPA 260/UFAC	WS, Bleach Cleanable, Coated Fabrics Cleaning – Refer to Mayer website for complete cleaning info.	2
PHOENIX	64% Polyurethane face, 23% Polyester/13% Cotton backing – PVC FREE	21 oz.	None	1,002,000 [^] Double Rubs	400 hours	Cal. 117-2013 NFPA 260/UFAC	WS, Bleach Cleanable, Coated Fabrics Cleaning – Refer to Mayer website for complete cleaning info.	3
SILVERWEAVE <i>Directional</i>	70% Vinyl face, 30% Polyester backing	30 oz.	Soil and stain resistant top coat	930,000 [^] Double Rubs	1000 hours	Cal. 117-2013 NFPA 260/UFAC	Bleach Cleanable, Coated Fabrics Cleaning – Refer to Mayer website for complete cleaning info.	3
SKETCH <i>Directional</i>	65% Vinyl face, 35% Polyester backing	32 oz.	Soil & stain resistant topcoat with ink resistant technology	1,150,000 [^] Double Rubs	650 hours	Cal. 117-2013 NFPA 260/UFAC	WS, Bleach Cleanable, Coated Fabrics Cleaning – Refer to Mayer website for complete cleaning info.	3
SLICK	70% Vinyl face, 30% Polyester backing	30 oz.	Soil & stain resistant topcoat with ink resistant technology	1,000,000 [^] Double Rubs	1000 hours	Cal. 117-2013 NFPA 260/UFAC	Bleach Cleanable, Coated Fabrics Cleaning – Refer to Mayer website for complete cleaning info.	3

REDUCED ENVIRONMENTAL IMPACT

These products are GREENGUARD Certified for low chemical and particle emissions to UL standard UL 2818 and may contribute to LEED certification. For complete information visit mayerfabrics.com and UL.com/gg.

CARE AND CLEANING INFORMATION

W: Water-Based Cleaner

WS: Water/Solvent Cleaner

ADDITIONAL INFORMATION

CAL TB 133: All patterns may comply with California Technical Bulletin 133 when combined with appropriate components.

#Refer to Mayer website for additional flammability tests.

[^]**Abrasion:** Multiple factors affect fabric durability and appearance retention, including end-user application and proper maintenance. Wyzenbeek results above 100,000 double rubs have not been shown to be a reliable indicator of increased fabric lifespan.

Custom Capabilities: All patterns can be custom colored. Minimum yardage applies.

Digital Swatch Card Color Matching: Due to color variations on different monitors and color printers, actual swatch colors may vary slightly. Please request a memo sample from Mayer Fabrics to ensure proper color representation.

Specifications: Specifications are correct at the time of printing. Additional specifications are available on our website.

*Key Largo is not recommended on mediatechnologies® Ad lib product.



These fabrics meet or exceed
these ACT performance guidelines.
Certification Marks owned by ACT

 **media**
technologies
envision • design • create

For additional colors, pre-approved patterns,
grade-ins, samples and specifications, please
refer to the Mayer Textile3D link.

Textile3D[™]
by Mayer Fabrics



MAYERFABRICS



† 231.861.2194
www.mediatechnologies.com

† 317.267.2626 or 800.428.4415 F 317.267.2629 or 877.7SAMPLE
www.mayerfabrics.com
©2017 Mayer-Paetz, Inc.

MTVAPCCD
50517