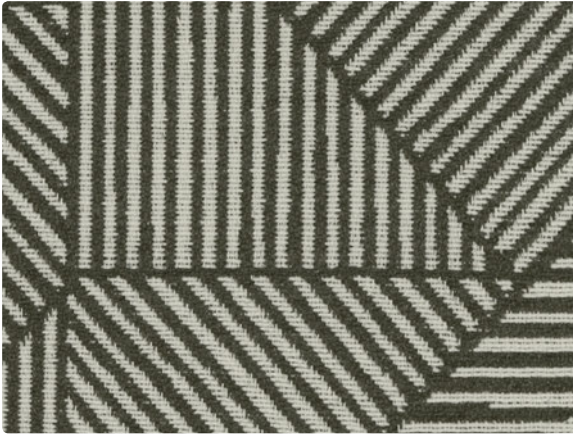




BEST SEATING TEXTILES EVER

IN THE WORLD EVER!





ACUCO
445-006 Zebra



GALVESTON
GV-017 Desert



GALVESTON
GV-027 Buff



GALVESTON
GV-026 Stucco



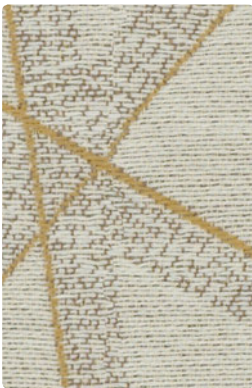
SYDNEY
456-007 Oatmeal



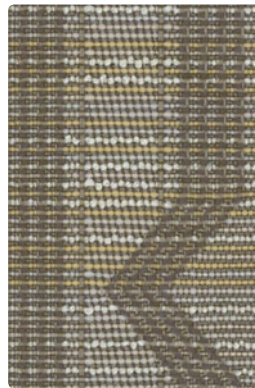
SYDNEY
456-017 Butterscotch



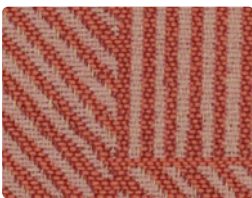
SYDNEY
456-000 Taupe



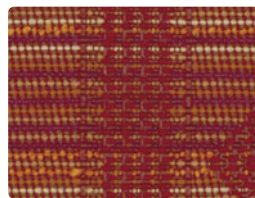
ELEVATION
451-002 Caramel



LONGITUDE
455-007 Taupe



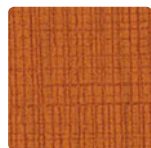
ACUCO
445-009 Coral



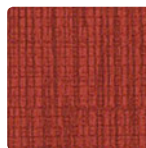
LONGITUDE
455-001 Port



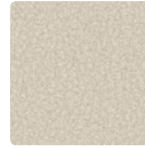
SCORE
SE-020 Pecan



SCORE
SE-009 Spice



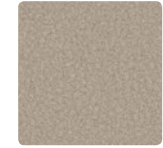
SCORE
SE-001 Rouge



NEO
NO-027 White Ash



NEO
NO-037 Rye



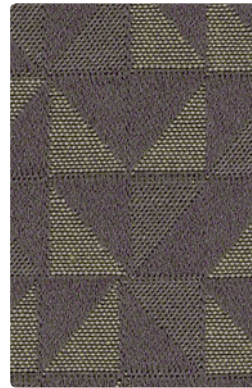
NEO
NO-067 Kiln



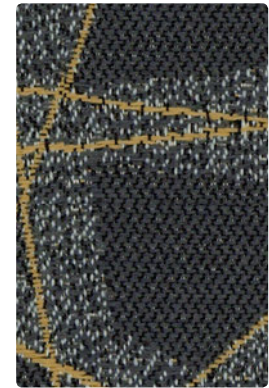
SCORE
SE-027 Almond



POLYGON
452-017 Stone



POLYGON
452-000 Sable



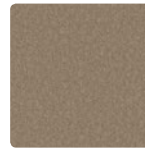
ELEVATION
451-006 Storm



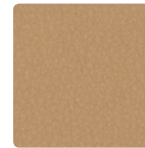
SCORE
SE-037 Pumice



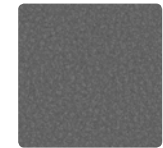
SCORE
SE-026 Charcoal



NEO
NO-057 Clay



NEO
NO-007 Camelback



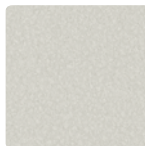
NEO
NO-056 Lead



ELEVATION
451-001 Ruby



ELEVATION
451-007 Granite



NEO
NO-047 Spring Wood



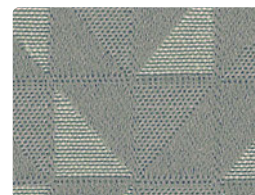
NEO
NO-016 Frost



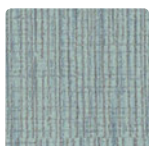
NEO
NO-046 Flint



SYDNEY
456-016 Silver



POLYGON
452-016 Smoke



SCORE
SE-033 Aquamarine



SCORE
SE-046 Aluminum



SCORE
SE-016 Slate



LONGITUDE
455-004 Ink



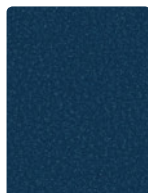
ELEVATION
451-004 Indigo



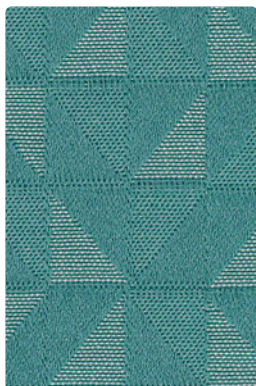
NEO
NO-044 Blue Sky



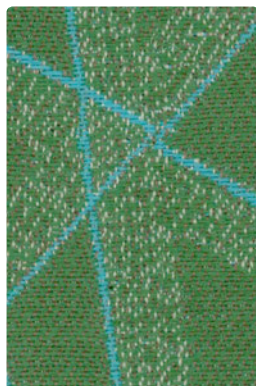
NEO
NO-024 Oceanside



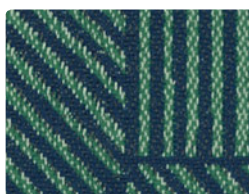
NEO
NO-014 Rapids



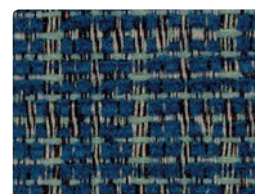
POLYGON
452-013 Ocean



ELEVATION
451-003 Spearmint



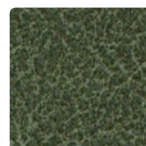
ACUCO
445-003 Peacock



SYDNEY
456-004 Ocean



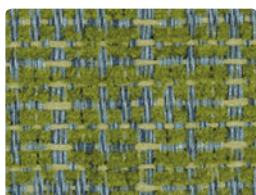
GALVESTON
GV-014 Stream



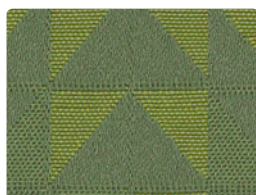
GALVESTON
GV-023 Hunter



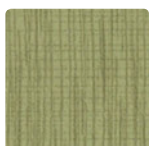
GALVESTON
GV-004 Twilight



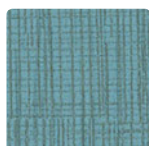
SYDNEY
456-003 Leaf



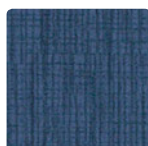
POLYGON
452-003 Grass



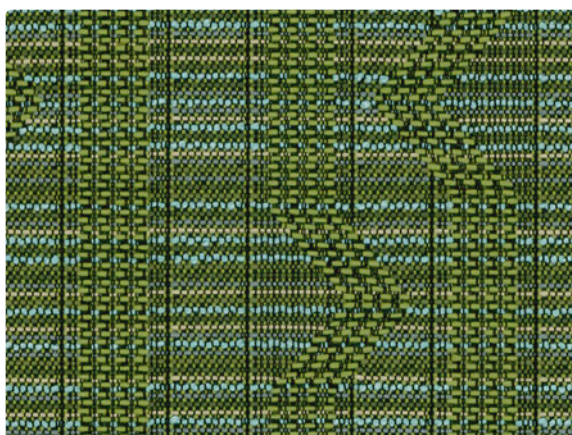
SCORE
SE-003 Basil



SCORE
SE-034 Turquoise



SCORE
SE-004 Indigo



LONGITUDE
455-003 Grass

TECHNICAL INFORMATION

Best Seating Textiles Ever!

Pattern 54"	Content and Backing	Weight/ Linear Yd.	Finish	Abrasion Wyzenbeek	Light- Fastness	Flammability	Cleaning Code	Grade
ACUCO <i>Directional</i>	65% Sunbrella® Acrylic, 35% Sunbrella® Polyester Backing: Acrylic Latex	15.4 oz.	Liquid and Stain Repel	100,000 Double Rubs	2000 hours	Cal. 117-2013 NFPA 260/UFAC	WS, BC	6
ELEVATION <i>Directional</i>	100% Post-Consumer Recycled Polyester Backing: Acrylic	15.8 oz.	Stain Repellent - PFOA and PFOS Free	80,000 Double Rubs	40 hours	Cal. 117-2013 NFPA 260/UFAC	WS, BC	4
GALVESTON	80% Vinyl - Phthalate Free face, 20% Polyester backing	30 oz.	Soil and Stain Resistant Top Coat with Ink Resistant Technology	250,000^ Double Rubs	200 hours	Cal. 117-2013 NFPA 260/UFAC FMVSS 302	BC, CFC	3
LONGITUDE <i>Directional</i>	80% Recycled Polyester (67% Pre-/ 13% Post-Consumer), 20% Nylon	10.5 oz.	Stain Repellent - PFOA and PFOS Free	100,000 Double Rubs	40 hours	Cal. 117-2013 NFPA 260/UFAC	WS	3
NEO	45% Polyurethane Polycarbonate - PVC Free face, 55% Polyester backing	20 oz.	Soil and Stain Resistant Top Coat	100,000 Double Rubs	200 hours	Cal. 117-2013 NFPA 260/UFAC	BC, CFC	3
POLYGON <i>Directional</i>	60% Post-Consumer Recycled Polyester, 40% Rayon Backing: Acrylic	13 oz.	GreenShield - PFOA and PFOS Free	100,000 Double Rubs	40 hours	Cal. 117-2013 NFPA 260/UFAC	WS	3
SCORE <i>Directional</i>	45% Polyurethane Polycarbonate - PVC Free face, 55% Polyester backing	20 oz.	WRITE AWAY™ - Soil & Stain Resistant Top Coat with Ink Resistant Technology	250,000^ Double Rubs	200 hours	Cal. 117-2013 NFPA 260/UFAC	BC, CFC	4
SYDNEY <i>Directional</i>	52% Recycled Polyester (34% Pre-/ 18% Post-Consumer), 48% Polyester	13.44 oz.	Nano-Stain Repellent - PFOA & PFOS Free	63,000 Double Rubs	40 hours	Cal. 117-2013 NFPA 260/UFAC	WS, BC	2

REDUCED ENVIRONMENTAL IMPACT

These products are GREENGUARD Certified or GREENGUARD Gold Certified for low chemical and particle emissions to UL standard UL 2818 and may contribute to LEED certification. For complete information visit mayerfabrics.com and UL.com/gg.

Elevation **Acuco**

 Sustainable. Attainable at Mayer Fabrics. The Eco-System icon indicates 100% recycled content.

 The Facts icon indicates that a textile has been evaluated based on the requirements of the multi-attribute sustainability standard NSF/ANSI 336 through an independent third-party certification body authorized by the Association for Contract Textiles.

Please refer to the Mayer website for additional environmental information.

CARE AND CLEANING INFORMATION

WS: Water/Solvent Cleaner

BC: Bleach Cleanable – 1 part bleach, 9 parts water = 10% bleach, 90% water solution. Do not clean/disinfect fabric for longer than 10 minutes using the 10% bleach solution. Always rinse promptly with clean water after applying the bleach solution. Failure to do so will void any and all warranties.

CFC: Coated Fabrics Cleaning – Refer to Mayer website for complete cleaning info.

DYE TRANSFER DISCLAIMER

Certain clothing and accessory dyes (such as those used on denim jeans) may migrate to lighter colors. This phenomenon is increased by humidity and temperature and is irreversible. Mayer Fabrics will not assume responsibility for dye transfer caused by external contaminants. Please check compatibility when using this product in combination with painted or varnished surfaces.

ADDITIONAL INFORMATION

CAL TB 133: All patterns may comply with California Technical Bulletin 133 when combined with appropriate components.

^Abrasion: Multiple factors affect fabric durability and appearance retention, including end-user application and proper maintenance. Wyzenbeek results above 100,000 double rubs have not been shown to be a reliable indicator of increased fabric lifespan.

Custom Capabilities: All patterns can be custom colored. Minimum yardage applies.

Specifications: Specifications are correct at the time of printing. Additional specifications are available on our website.

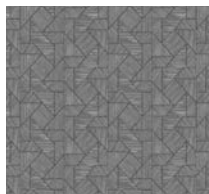


These fabrics meet or exceed these ACT performance guidelines. *Certification Marks owned by ACT*

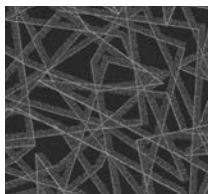
Elevation, Longitude



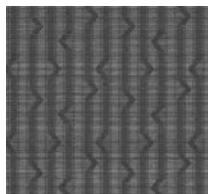
Water and Stain Repellent Finish



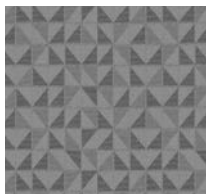
ACUCO – Repeat:
7.1" H, 5.07" V



ELEVATION – Repeat:
14.25" H, 13.25" V
Non-Matching



LONGITUDE – Repeat:
4.75" H, 11.375" V



POLYGON – Repeat:
3.5" H, 4.5" V



† 231.861.2194 www.mtcontract.com

For additional colors, pre-approved patterns, grade-ins, samples and specifications, please refer to the Mayer Textile3D link.

Textile3D™
by Mayer Fabrics



MAYERFABRICS



† 231.861.2194 www.mediatechnologies.com

† 317.267.2626 or 800.428.4415 F 317.267.2629 or 877.7SAMPLE
www.mayerfabrics.com
©2019 Mayer-Paetz, Inc.

MTMTCBSTECD
50519